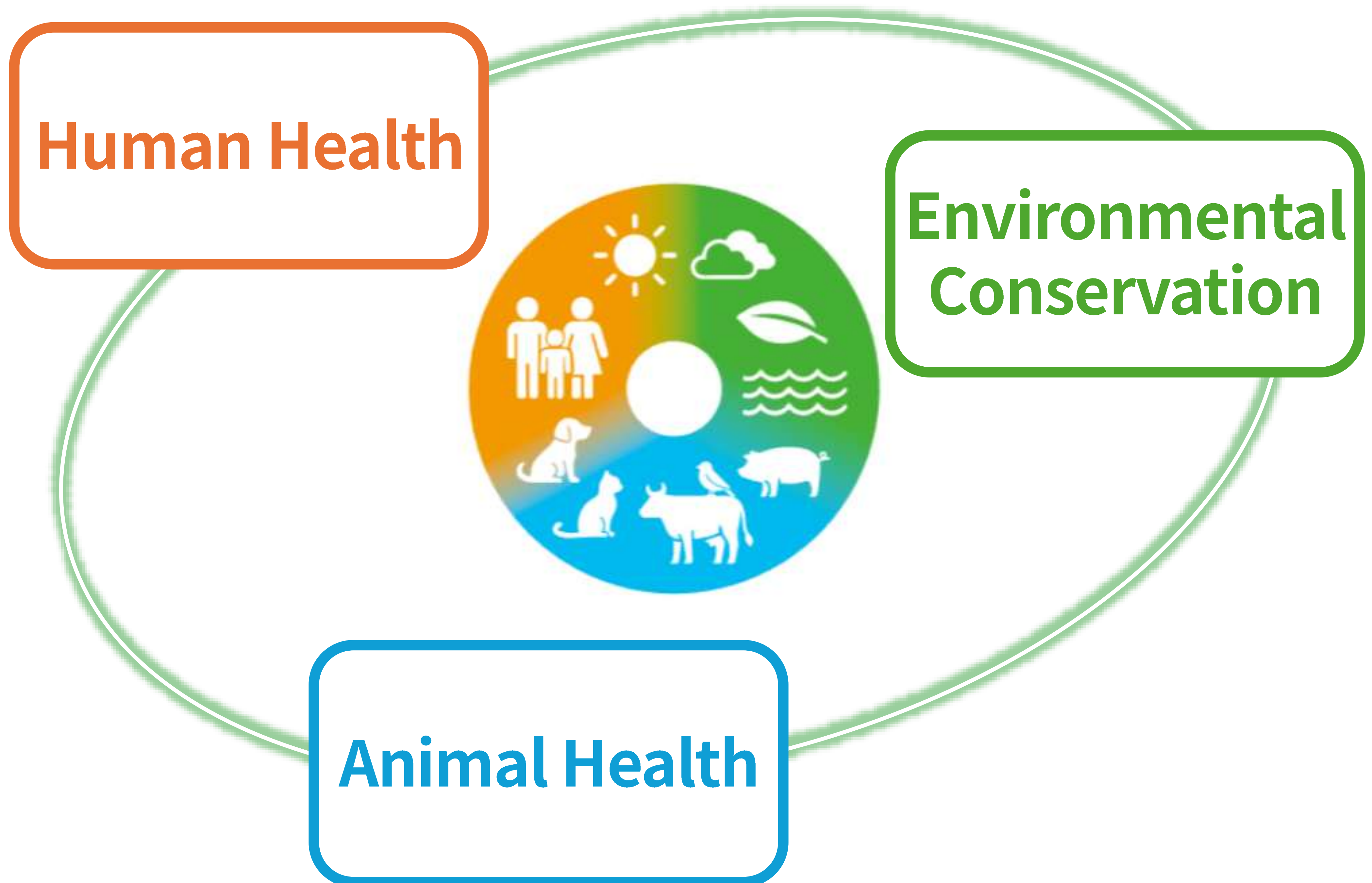


# 2026: One Health in Action, Starting from Tokyo

“**One Health**” is an integrated, unifying approach that recognizes that the health of humans, animals, and the environment are closely interconnected and interdependent, and should therefore be protected and addressed together.



The “One Health” approach—which recognizes that the health of humans, animals, and the environment are interconnected—is becoming more important than ever, including from the perspective of preparing for future pandemics.

# Why One Health Now ?

Tokyo is a megacity of approximately 14 million residents, with highly concentrated urban functions. As a result, it faces an elevated risk of the rapid spread of infectious diseases. At the same time, the Tama area, in western Tokyo and the island regions are rich in forests and farmland and support diverse wildlife. Protecting the natural environment and biodiversity in these areas is a key priority



## Increasing trend of Zoonotic Diseases

Approximately 60–70% of emerging infectious diseases, such as Ebola virus disease, SARS, novel influenza, and COVID 19, are of animal origin. As human activities increasingly overlap with wildlife habitats, the risk of emerging diseases is on the rise.



## The Growing Threat of Antimicrobial Resistance (AMR)

Antimicrobial agents are widely used in human medicine as well as in livestock and fisheries. To limit the spread of antimicrobial-resistant bacteria across humans, animals, and the environment, coordinated, cross-sectoral efforts are essential.



## Damaged Environment, Changing Ecosystems

Deforestation, climate change, and the loss of biodiversity heighten the risk of emerging diseases, and also impacts food security as well as the quality of water and air.



## Threats to Food Safety

Contamination of meat, dairy products, and seafood by pathogens, pesticides, and chemical substances cannot be addressed without proper animal health management and environmental protection.

# Tokyo, One Health in Action

*Under the concept of "Tokyo, One Health in Action," we will work with collaborators across various fields, including health care, veterinary medicine, public health, and the environment, to strongly promote understanding and development of the One Health approach.*

KOIKE Yuriko, Governor of Tokyo

**2032- (Planned)**

## **Information Dissemination at the New Tokyo Animal Welfare Consultation Center**

Utilization of the Animal Resource Library and Multipurpose Hall



**2026- (Planned)**

## **Providing Experiential Content in a Metaverse Environment**

Virtual experiences focused on infectious disease prevention and disaster preparedness for pets, including evacuation with pets



**April 2026**

## **Establishment of a One Health Promotion Portal**

Showcasing the One Health concept and initiatives by the Tokyo Metropolitan Government

# Tokyo's Action 1

## Human Health

The Tokyo Metropolitan Government (TMG) is strengthening efforts to detect, prevent, and treat diseases at an early stage, including zoonotic diseases and antimicrobial resistance (AMR).

### Zoonotic Disease Control Measure

#### Tokyo iCDC, An Expert Network Overseeing Supporting Disease Control

At the Tokyo Center for Infectious Diseases Prevention and Control (Tokyo iCDC), the One Health Approach Promotion Task Force provides expert advice to support Tokyo's response to priority zoonotic diseases, including Mpox.



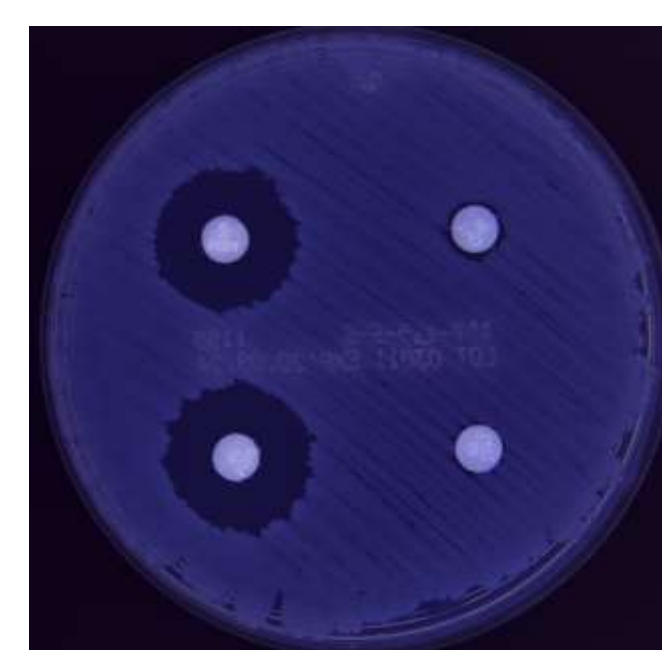
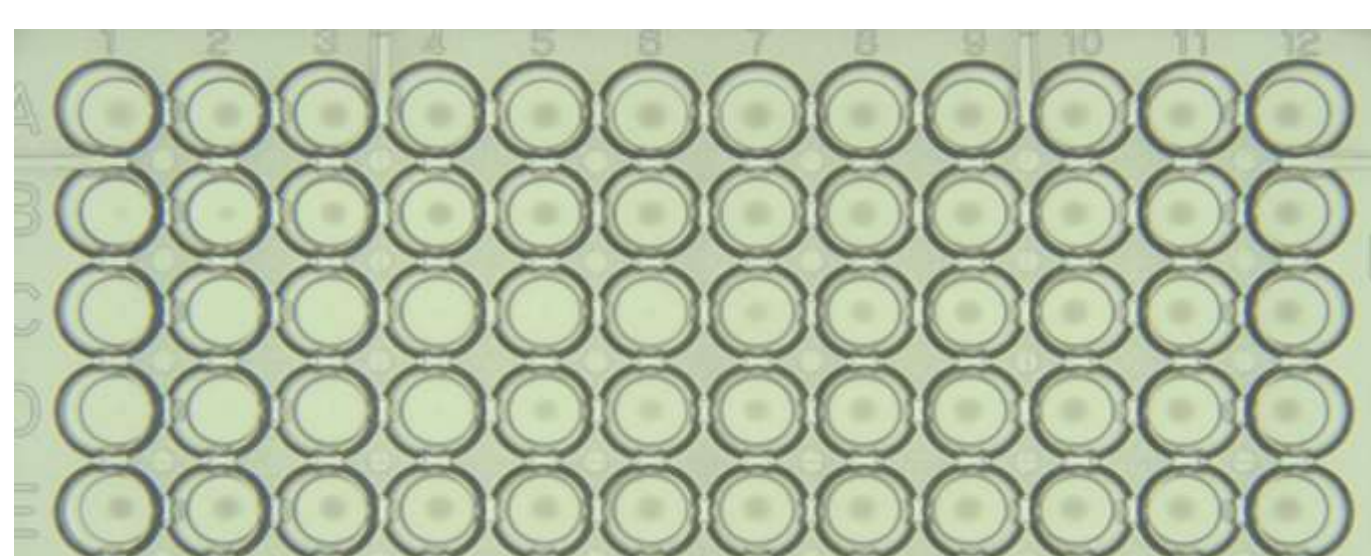
Tokyo iCDC is a network of experts that conducts surveillance and analysis, as well as the collection and dissemination of information, across a wide range of fields related to infectious diseases.

### Antimicrobial Resistance (AMR) in Humans

#### Promotion of Analysis of Antimicrobial-Resistant Bacteria

At the Tokyo Metropolitan Institute of Public Health, antimicrobial-resistant bacteria detected in Tokyo are compared with those found in Japan and abroad to assess current AMR trends and conduct molecular epidemiological analyses.

Broth  
Microdilution  
Method



Disk  
Diffusion  
Method

# Tokyo's Action 2

## Animal Health

TMG is strengthening animal disease surveillance, alongside animal welfare and protection, to enable early detection of infectious diseases and prevent their spread.

### **Tokyo Animal Welfare Consultation Center**

#### **Tokyo's Hub for Animal Welfare and Management**

At the center, animals such as injured dogs and cats with unknown owners are taken in for care and treatment. The Center also promotes adoption of these animals to Tokyo residents and provides guidance to pet shops and related businesses on responsible animal care.



### **Avian Influenza Control Measures for Poultry**

#### **Thorough Early Detection and Outbreak Prevention**

The Tokyo Metropolitan Government conducts monitoring tests at poultry farms to enable early detection of avian influenza and other diseases. It also provides guidance on animal husbandry and hygiene management to prevent outbreaks, while preparing for potential incidents through biosecurity drills and stockpiling preventive supplies.



# Tokyo's Action 3

## Environmental Conservation

TMG protects habitats for diverse species through a wide range of initiatives, including measures such as population management of Japanese deer, forest restoration, and the conservation of air and water environments.

### Japanese Deer Management and Damage Control

#### Promoting Monitoring and Damage Prevention

To reduce the impacts of increasing Japanese deer populations on ecosystems and agriculture and forestry, TMG works in collaboration with municipalities and hunting associations to implement capture programs, conduct monitoring surveys, and install and manage vegetation protection fencing.



### Forest Restoration in the Tama Area

#### Restoring and Enhancing Forest Functions

TMG conducts thinning and other forest management activities in planted forests in the Tama Area to conserve habitats for diverse species, while restoring and enhancing the public functions of forests, including their role in water resource conservation.



### Conservation of Air and Water

#### Conducting Comprehensive Monitoring of Air and Water

To ensure a healthy and comfortable living environment, the TMG continuously monitors air pollutants at 82 sites across Tokyo and enforces regulations and provides guidance to factories and other facilities. For water environments, water quality surveys are conducted in rivers, lakes, and coastal areas.

